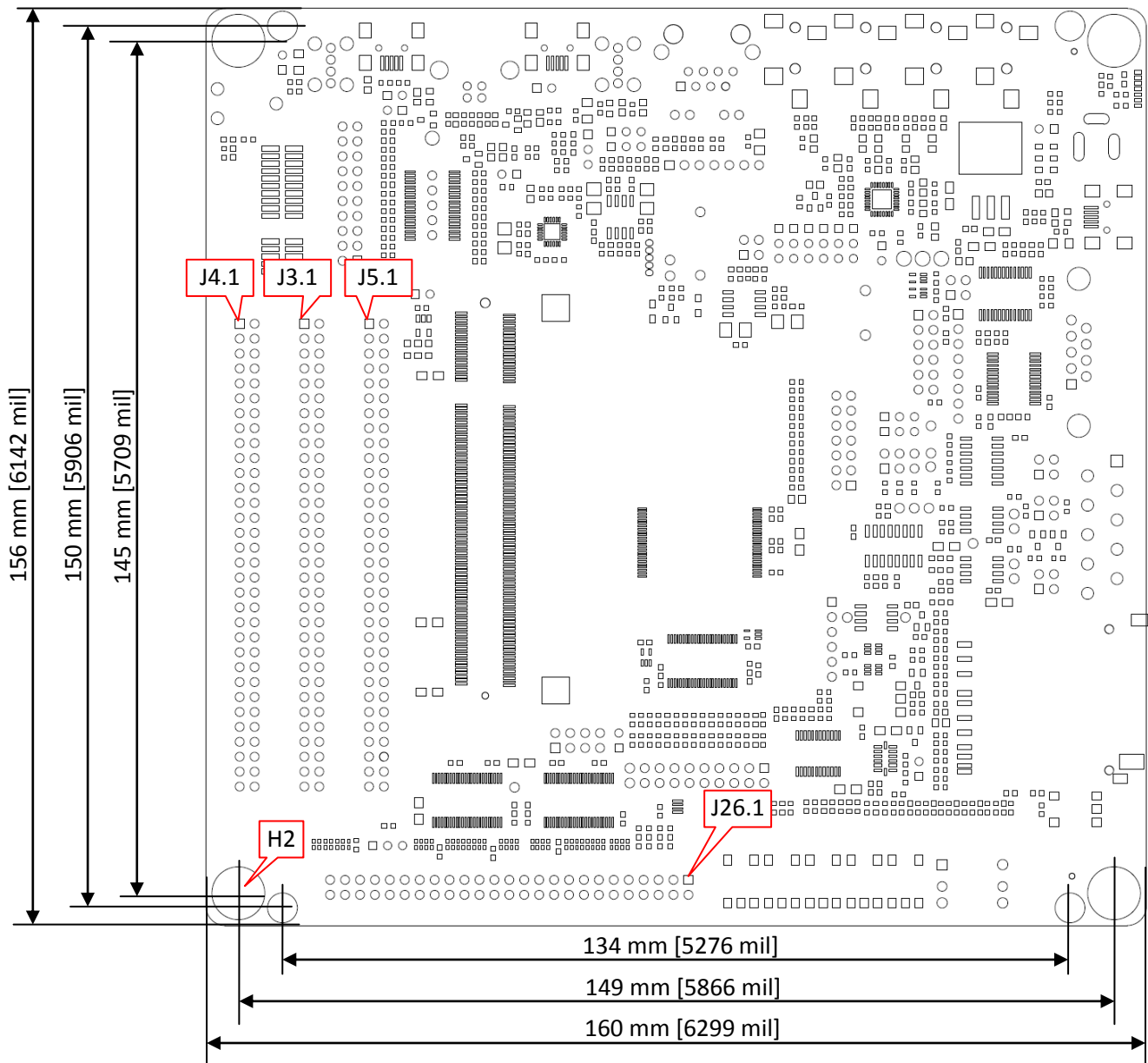


OEM Base Board rev PB1 measurements

mm measures [milmeasures]



Coordinates of expansion connectors:

Mounting hole H2	(5.50, 5.50) mm	[216.5, 216.5] mil
Expansion connector J4, pin 1	(5.73, 102.37) mm	[225.6, 4030.3] mil
Expansion connector J3, pin 1	(16.73, 102.37) mm	[658.7, 4030.3] mil
Expansion connector J5, pin 1	(27.73, 102.37) mm	[1091.7, 4030.3] mil
Expansion connector J26, pin 1	(82.08, 7.77) mm	[3231.5, 305.9] mil